

# Design for Leisure

## Restaurants Guide



How acoustic solutions are a vital ingredient for a successful restaurant

**Sounds Beautiful**

If you're designing a restaurant from scratch or retrofitting an existing one, this brochure is for you. You'll find some of the latest trends shaping restaurant design and tips for making acoustics more than just an afterthought.

This easy-to-navigate booklet was developed for Architects and Designers as a tool to inspire and guide the reader with insightful knowledge about how acoustic ceilings can provide both Instagrammable design features and an exceptional ambience to keep customers returning.



**Rockfon acoustic solutions  
create a wonderful  
ambience for restaurants,  
so consumers enjoy  
themselves more.**

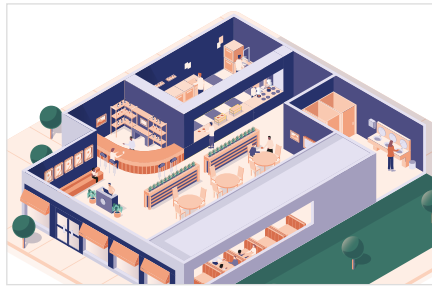
**Parik Chopra**

Managing Director, Rockfon

# Content



**04**  
Current trends in restaurants



**06**  
How to design for different spaces in a restaurant



**08**  
Reception and bar area



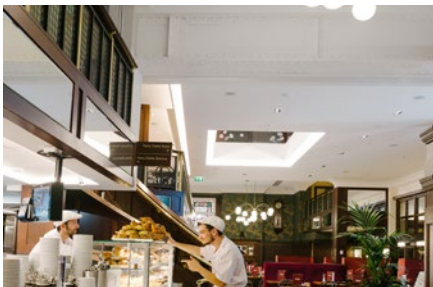
**12**  
Dining area



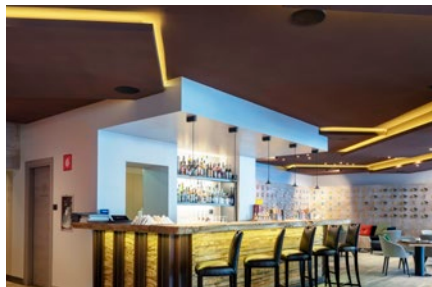
**16**  
Kitchen



**20**  
Restrooms



**22**  
Product Overview



**26**  
Product Highlight



**28**  
We are your sustainability partner



**30**  
Our services

# Current design trends in Restaurants

Irrespective of whether you're designing a pop-up, fast food, casual dining or fine dining restaurant, you want to create the perfect ambience and one which enhances the taste of the food. Mmm! That sounds good to us - which is why we're continuously collaborating with architects and interior designers to find the right solutions that both set the tone and feel of a room.

Let's take a look at which trends are shaping restaurant design today.



## Colour trends for 2021

The use of colour will create a unique mood for your space. The current Biophilic awareness, Uncluttered Wabi-Sabi, Calm Enclosure and Technology colour trends offer designers huge scope for setting a perfect tone for the restaurant.

### How can we help

Consider your ceiling as a 'fifth wall' that's as significant as the walls and flooring - not just a feature you put colour on at the end of the design process. Our acoustic solutions come in 34 exclusive colours, giving you huge scope for your project.





## Acoustics! Acoustics! Acoustics!

Complaints about poor restaurant acoustics is a growing trend. Using platforms like TripAdvisor and Yelp, customers are voicing their opinions. ZAGAT, a US National Restaurant Review, found that noise was the 2nd most common customer complaint in restaurants.

### How can we help

We offer the best in class acoustic solutions. Stone wool is the core material in all Rockfon products, and it is an extremely sound absorbent material. They are independently tested in certified laboratories using an Alpha w ( $\alpha_w$ ) measurement in accordance with ISO11654.

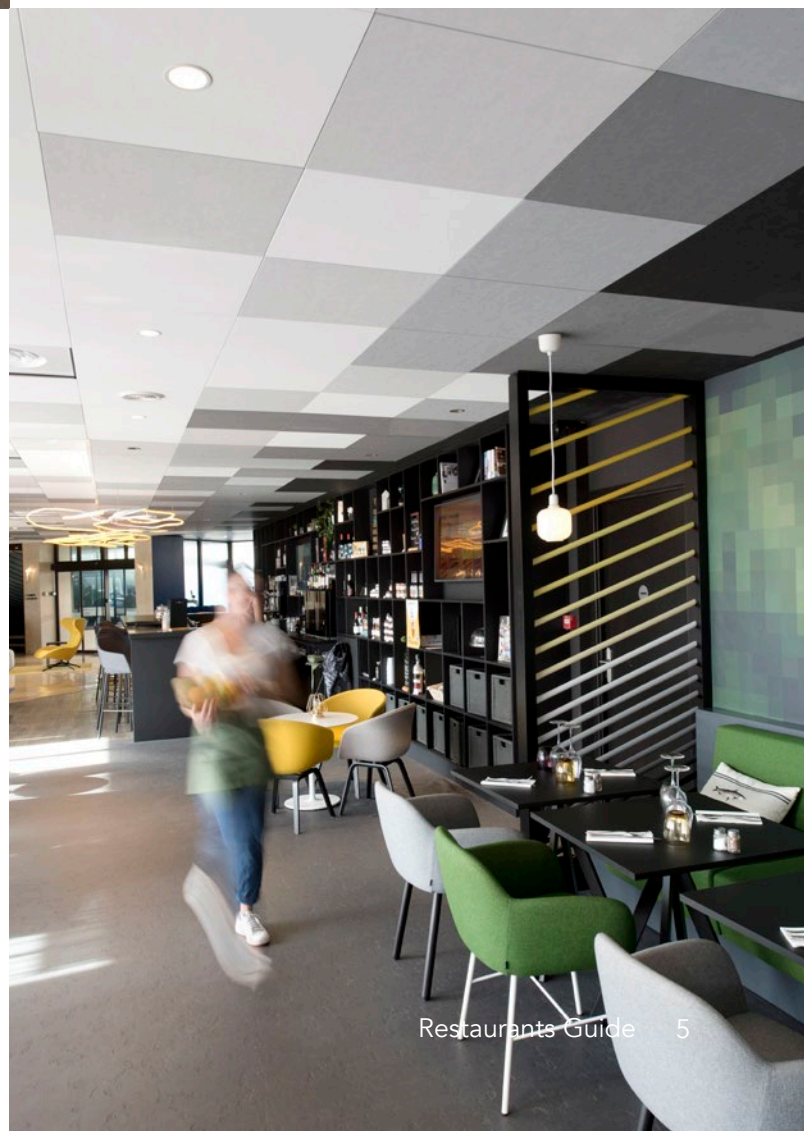


## An Instagrammable ceiling

There are endless ways to use your ceiling to express the personality of your restaurant. Unique shapes or curves, an exposed-soffit for an industrial vibe, a radical centrepiece - all of these will make your restaurant memorable.

### How can we help

We offer a wide range of acoustic ceiling solutions, everything from a monolithic ceiling to customisable acoustic baffles, islands and wall panels, making sure that even with a radical design, you are still taking care of the acoustics.



# How to design for different **spaces** in a restaurant

## Mmm! Now that sounds good

Creating a great restaurant experience means giving customers a taste of great food, great service and an exceptional ambience which includes design, lighting, decor, furnishings and acoustics. Designing the perfect restaurant isn't easy, and many elements need to be considered.

## Strength of Rockfon

A starting point for a comfortable and inviting restaurant is excellent acoustics, and we offer that on our menu. Our broad range of solutions gives you the freedom to design comfortable, colourful and hygienic spaces, both for the people working there and your guests.

- 1 Reception and bar area
- 2 Dining area
- 3 Kitchen area
- 4 Restrooms







# Reception and bar area

A comfy restaurant reception and bar area is an integral part of the restaurant experience. It allows your customers to sit and have a drink while they wait for their table to be ready or to keep them there after their meal - both directly increasing sales.



## Design space

The reception and bar areas are major focal points for any restaurant and a great opportunity to tie a slightly different design theme from the other sections of the restaurant. Here you can be playful and fun, adding colours and other design elements to create a great vibe and to allow your bartenders to show off their skills.

## Hard surfaces and acoustics

Hard and reflective surfaces are commonplace for these areas which is great for durability but terrible for acoustics..

Adding acoustics solutions to these areas is vital to creating a space that sounds as beautiful as it looks.



//

The noise was a big issue in the restaurant and it was often criticised. Now we receive many compliments from customers about the food, decoration, but also for the acoustic comfort.

Alexandre Rondepierre,  
Director, Les Deux Girafes

## Here are some products we recommend

### Rockfon Blanka®

Rockfon Blanka gives you the best acoustic properties that ensure a comfortable noise level. The deep matt and super white surface has high light reflection and light diffusion properties, helping you capitalise on natural light.

### Rockfon® Sonar®

It's attractive micro-textured white surface, with strong edges for superior durability creates a comprehensive range of aesthetically pleasing tiles.

### Rockfon Eclipse®

This innovative frameless acoustic island has excellent sound absorption. It's a great complement to an industrial-style design or if you just need some extra absorption.

# A hospitable welcome

---

## Reception and bar area design solutions

When a customer walks into a restaurant, they need to feel like they want to be there. The buzz of the reception or bar mustn't drive people away, which is why it's important to remember to manage noise and make the atmosphere just as appealing as the design.

## Product Highlight

### Rockfon Color-all®

Rockfon Color-all is a versatile acoustic ceiling tile and grid that comes in 34 exclusive colours, inspired by nature and well-being.

It is available in concealed, semi-concealed and visible solutions and in a variety of tile sizes, giving you total design freedom.





## ▲ CASE STUDY

# Les Deux Girafes

Paris, France

### *Challenge:*

Les Deux Girafes is a contemporary hotel-restaurant located in the 10th arrondissement of Paris. A converted furniture factory, it maintains many of its original industrial features including a lot of hard surfaces.

### *Solution and results:*

The hard surfaces of the restaurant negatively impacted the acoustics in the space and created a lot of problems for people. "Noise is a big issue in the restaurant and it was often criticised. Now we receive many compliments from customers about the food, aesthetics, but also for the acoustic comfort" said Hotel director Alexandre Rondepierre. Rockfon® Mono® Acoustic in black was chosen to compliment the trendy dining area.

## Acoustic design tips

Three tips for creating a great acoustic environment in the reception and bar area.

1. Use highly sound-absorbing material to control the noise levels.
2. Have rounded edges or three-dimensional features to break up the smooth surfaces that reverberate noise.
3. Add greenery and artwork around the reception and bar area.



# Dining area

Whilst every restaurant focuses a huge amount of effort on food and decor, noise control is often overlooked which can be financially costly. For instance, over 1 in 4 people say they received the wrong order when dining due to the noise environment<sup>1</sup>. In contrast, getting the right sound levels will kill the noise and enhance the vibe.

1. Source: <https://rnid.org.uk/wp-content/uploads/2020/05/SpeakEasy-report.pdf>

## Design

Modern restaurant design tends to be minimalist, with open kitchens, hard, smooth surfaces and materials like concrete, wood and glass. These designs create stunning visuals, but a terrible indoor environment that can drive potential customers away and prevent repeat visits.

## Enhance the dining experience

Dining in a restaurant is more than just about great and exciting food and design, it's about creating special moments with the people you're with, which is why it is so important that conversation at the table can be heard without having to raise their voice. This common occurrence, where people are forced to speak loudly, forces others to do the same, which quickly escalates and raises noise levels. This is known as the Lombard Effect.

People in restaurants want to feel comfortable, almost like they were at home, and enjoy the mood of the restaurant, just as much as they want to enjoy the food.

Here are some products we recommend

### Rockfon Blanka®

Rockfon Blanka gives you the best acoustic properties that ensure a comfortable noise level. The deep matt and super white surface has high light reflection and light diffusion properties, helping you capitalise on natural light.

### Rockfon Eclipse® wall panel

These aesthetic, frameless acoustic wall solutions are perfect for restaurants that are looking for a clean, minimalist design. The wall panels can be used on their own or to complement acoustic ceilings to bring additional sound control to keep noise levels down.

9 out of 10 people say background noise is the biggest problem they face when eating out.

Dixon, Luke, Speak Easy Report:  
Hearing the views of your customers



## Multi-functional dining spaces

Larger restaurants able to accommodate larger groups in separate rooms have the flexibility to incorporate the rooms as part of the main dining area when not in use for special celebrations or events. Because they serve a dual purpose, it is important that these spaces share the same visual and acoustic aesthetic as the rest of the dining area. It shouldn't feel orphaned off from the rest of the restaurant.

# Kill the noise, not the vibe

## Dining area design solutions

Poor acoustics in restaurants is getting noticed by consumers - and they're not afraid to say so. According to one survey, 79% of customers have almost left a restaurant, café or pub early because it was too noisy. Bad acoustics can be financially costly.

## Product highlight

### Rockfon Eclipse®

This innovative and aesthetically pleasing frameless acoustic ceiling island offers excellent sound absorption. This is a great complement to a minimalist style restaurant.

Quick and easy to install, this acoustic solution is perfect for a new or retrofit restaurant concept looking to improve the acoustic environment.



# Le Petit Sabayon

Paris, France

## Challenge:

The owners of this small restaurant on the outskirts of Paris renovated a pre-existing restaurant. They removed the carpets and curtains to create a more refined, fresher look but found they had problems with the acoustic environment.

## Solution and results:

It quickly became apparent that the restaurant was too noisy, disturbing guests and staff alike. To overcome the poor restaurant acoustics, the owners chose Rockfon Eclipse® islands because of its high sound absorption and unobtrusive white aesthetic.

## Acoustic design tips

Three tips for creating the perfect acoustic atmosphere in the dining area.

1. Use highly sound-absorbing ceilings and wall solutions to control the noise levels.
2. Add other porous materials in the dining area like tablecloths, curtains, rugs and chairs with fabric on them.
3. Add extra sound absorbing material under the tables and add felt tabs beneath the chairs.

CASE STUDY ▼





# Kitchen

Restaurant kitchens are bustling and high-stress spaces where speed, consistency, communication and hygiene are all critical success criteria that require thoughtful design.

Here is the product we recommend

 **Rockfon® MediCare® Standard**

An outstanding balance of acoustic comfort and cleanability that doesn't contribute to the growth of MRSA and ensures low particle emission. By choosing a ceiling solution that is resistant to mould and bacteria, you ensure a safe space.





Speaking louder to be heard continuously escalates the noise and makes a room even noisier. This is known as the 'Lombard effect'.

Pascal van Dort,  
Global Acoustics Ambassador



### A clean kitchen

Hygiene is a crucial concern for every kitchen, which is why sanitation regulations are so high and inspections so frequent. It is vital in these spaces that the building materials, including the ceiling, can be cleaned and disinfected regularly. It is also key that the building materials in this space don't contribute to the spread of micro-organisms and bacteria.

### A healthy kitchen

Kitchens are busy spaces with a lot of activity and reflective surfaces. These design requirements, whilst great for hygiene and cleanability, is terrible for acoustics. Chefs talking to each other, ovens and grills that are humming and piping hot, clanging pots and pans all come together, creating a cacophony of noise that can disturb guests and create an unhealthy working environment.

## Acoustic design tips

Two tips for creating an ideal acoustic space in the kitchen.

1. Use sound-absorbing solutions that meet the most rigorous hygiene codes and safety regulations and that are resistant to mould and bacteria.
2. Make sure sound absorption is high to avoid that sound bouncing off the surfaces.

# Great hygiene that sounds beautiful

## Kitchen area design solutions

The lively kitchen space requires a thoughtful design that is hygienic and prevents sound levels from escalating, safeguarding the wellbeing of chefs and people working in the kitchen, and distracting guests from the food in front of them.

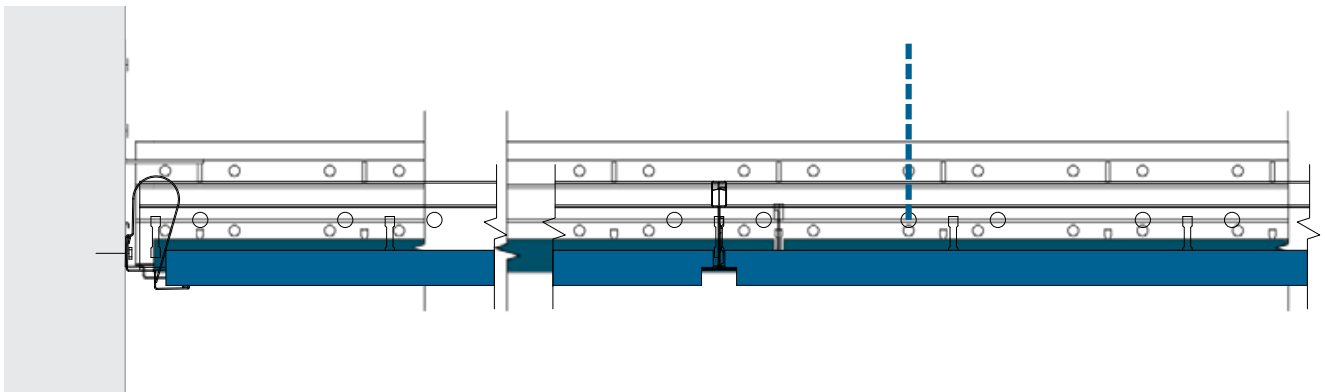
## Product highlight

### Rockfon® System T24 A, E™

This is a ceiling comprising a 24mm wide exposed grid made from galvanised steel with a smooth white\* visible surface and square (A edge) and / or rebated, tegular (E edge) tiles. It comprises main runners, cross tees (available in many lengths), perimeter trims and a variety

of accessories. All the grid profiles have a uniform height of 38mm ensuring smoother integration of services and fittings. Rockfon System T24 A/E can be either suspended or directly fastened to the soffit using a variety of hangers.

*\*Other colours are available to order.*





//

81% of UK chefs have experienced poor mental health during their careers. Nearly half believe not enough is being done to support their mental wellbeing in the workplace.

Source: Food Service Equipment Journal  
(link: <https://www.foodserviceequipmentjournal.com/experts-view-how-kitchens-can-be-designed-to-support-the-mental-health-of-chefs/>)

## Llaut Palace Hotel

Mallorca, Spain

### *Challenge:*

The Llaut Palace Hotel restaurant had to contend with some difficult circumstances when finding a beautiful artistic vision and exceptional visual to complement the restaurant's design, with its open kitchen and acoustic aspirations.

### *Solution and results:*

Architect Arantxa Guerrero opted to use Rockfon® Mono® Acoustic to create his ceiling design vision - an inverted pyramid structure, inspired by origami's fine art. "We wanted to transmit this sensation of lightness; the element of origami communicates movement and flexibility, expanding the space of the room," explains Guerrero.

CASE STUDY ►





# Restroom

A comfortable restroom is an important part of the customer experience and should offer privacy and good hygiene. While the ceramic walls and other hard surfaces found in bathrooms are great for hygiene and cleanability, they're not ideal for privacy, which is why it's important to look at acoustic solutions that both dampen sound reflection, and can withstand the regular cleaning rota.

## Acoustic design tips

Two tips for creating an ideal acoustic space in the restroom.

1. Use sound-absorbing solutions that meet the most rigorous hygiene codes and safety regulations and that are resistant to mould and bacteria.
2. Make sure sound absorption is high to avoid sound bouncing off the surfaces.

### Keep things clean

To control noise in bathrooms, it's important to find an acoustic solution that will dampen sound but that can also withstand thorough cleaning, which is tough on the material. It is also essential that the building materials used in the bathrooms don't contribute to the spread of microorganisms.



### Here are some products we recommend

#### Rockfon Color-all®

Our Rockfon Color-all range comes in 34 exclusive colours of acoustic ceiling and wall solutions to inspire and enhance every space. Because it's made from stone wool, it doesn't contribute to the spread of bacteria.

#### Rockfon® MediCare® Standard

A great balance of acoustic comfort and cleanability that doesn't contribute to the growth of MRSA and ensures low particle emission.

#### Rockfon Blanka®















Rockfon Blanka ceiling is our whitest and brightest tile, but it also provides best in class acoustics. We know that bathrooms are harsh environments, but don't worry, we got you covered. Rockfon Blanka has a highly durable surface resistant to dirt and is easily cleaned.

#### Rockfon® Sonar®

It's attractive micro-textured white surface, with strong edges for superior durability creates a comprehensive range of aesthetically pleasing tiles.

# Restaurant product specs and where to use them

Let's take a final look at the products and rooms that you've just seen

Properties	 <b>Rockfon® Mono® Acoustic</b>	 <b>Rockfon Blanka®</b>	 <b>Rockfon Color-all®</b>	 <b>Rockfon® Koral™</b>
 <b>Sound absorption</b>	$\alpha_w$ : up to 1.00 (Class A)	$\alpha_w$ : up to 1.00 (Class A)	$\alpha_w$ : up to 1.00 (Class A)	$\alpha_w$ : up to 0.95 (Class A)
 <b>Direct sound insulation</b>	$R_w = 22$ dB	-	-	-
 <b>Surface durability</b>	-	Durability and dirt resistance. Wet-scrub resistance	-	-
 <b>Impact Resistance</b>	-	Class 3A (Fastening clip)	-	-
 <b>Light reflection</b>	87% light reflection >99% light diffusion	87% light reflection >99% light diffusion	Colour-dependent	86%
 <b>Cleaning</b>	Vacuum	Vacuum, damp cloth	Vacuum	Vacuum, damp cloth
 <b>Hygiene</b>	Stone wool provides no sustenance to microorganisms			
 <b>Humidity and sag resistance</b>	Up to 100% RH			
 <b>Reaction to fire</b>	A2-s1,d0	A1	A1 Precious: Class A2-s1,d0	A1
 <b>Environment</b>	Recyclable			

*\*(Twice a year) - Low pressure foam cleaning - High pressure cleaning: Max. 80 bar, min. 1 metre distance, water spread at 30° angle. The tiles should be clipped and sealed into the grid with a silicone sealant containing fungicide. - Chemical resistance: resistant to diluted solutions of ammonia, chlorine, quaternary ammonium and hydrogen peroxide.*



**Rockfon®  
Tropic™**



**Rockfon® Medi-  
Care® Standard**



**Rockfon  
Eclipse®**



**Rockfon® Explise  
wall panel**



**Rockfon® Univer-  
sal™ Baffle**



**Rockfon® Sonar®**

$\alpha_w$ : up to 1.00  
(Class A)

$\alpha_w$ : 0.95 (Class A)  
NRC = 0.90

$A_{eq}$  (m<sup>2</sup>/item)

$A_{eq}$  (m<sup>2</sup>/item)

$A_{eq}$  (m<sup>2</sup>/item) C, H\*

-

-

-

-

-

-

-

-

-

-

-

-

-

-

-

-

-

-

86%

86%

87% light reflection  
(rear side: 79%) >99%  
light diffusion

87% light reflection (rear  
side: 79%) >99% light  
diffusion

White (77%)  
Charcoal (4%)  
Color-all (Colour  
dependent)

85%

Vacuum

Vacuum, damp cloth

Vacuum, damp cloth

Enhanced durability and  
dirt resistance. Wet-  
scrub resistance

Vacuum

Vacuum, damp cloth

Stone wool provides no sustenance to microorganisms

Up to 100% RH

A1

A1

A1 Rockfon Eclipse  
Rectangle 2360: A2-  
s1,d0

A1 Rockfon Eclipse  
Rectangle 2360: A2-  
s1,d0

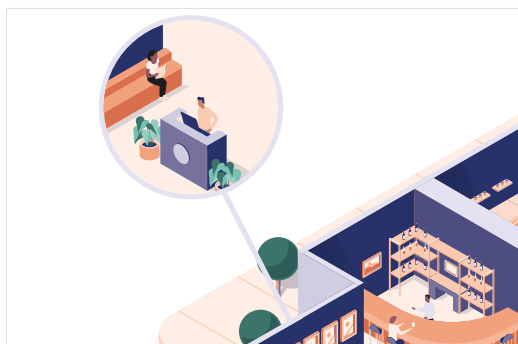
A2-s1,d0

A1

Recyclable

# The right product in the right space

People want to feel at home when they visit a restaurant - a place where they can enjoy good company and great food. More and more, we're seeing the role acoustics is playing in the dining experience, which is reflected in reviews from food critics and customers. Please look at our overview to see what products we recommend for the perfect combination of style and acoustic comfort.



## ENTRANCE AND BAR

Noise control

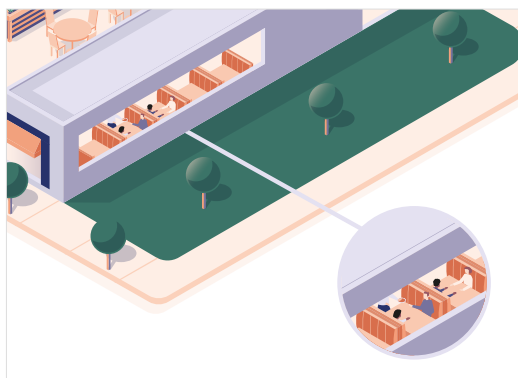
 Rockfon® Mono® Acoustic

 Rockfon Blanka®

 Rockfon Color-all®

 Rockfon Eclipse®

 Rockfon Sonar®



## DINING AREA

Speech clarity & noise reduction

 Rockfon® Mono® Acoustic

 Rockfon Blanka®

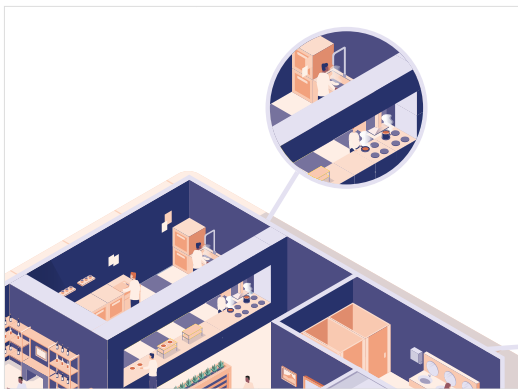
 Rockfon Color-all®

 Rockfon Eclipse®

 Rockfon Eclipse® Wall

 Rockfon Sonar®

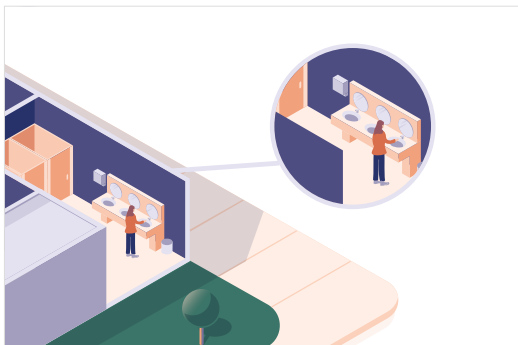




### KITCHEN

Noise control & hygiene

 Rockfon MediCare®



### RESTROOMS

Privacy & hygiene

 Rockfon Blanka®

 Rockfon® Tropic™

 Rockfon Color-all®

 Rockfon Sonar®

 Rockfon MediCare®



# Rockfon® Mono® Acoustic

- as stunning as it sounds

This is not a “traditional” suspended ceiling tile and grid. It is a 40mm stone wool panel sprayed with an acoustic render to provide a seamless surface which brings great acoustic comfort and a crisp, clean finish.

It creates opportunities for dramatic designs - like curves and geometric patterns - or it can be direct fixed to an existing plasterboard ceiling to provide a discreet acoustic addition to the existing building fabric. It can be used on both ceilings and walls.





# The influence of **Rockfon Color-all®**

Want to enhance wellbeing and ambience by using colour? Our colourful ceilings and wall solutions - including ceiling tiles and grid, islands, baffles and wall panels - don't just reduce noise; they also help create unique spaces. The range comes in 34 exclusive colours inspired by nature and well-being and current colour trends, giving you great opportunities to reflect your concept and brand identity.

- Choose from everything from relaxing browns, inspiring greens, comforting pinks, calming blues, soft greys and more
- An extensive range of semi-concealed and concealed edges in a large variety of module sizes with matching grids
- Add colour to the walls and set the mood of the restaurant and brand experience

# We are your sustainability partner

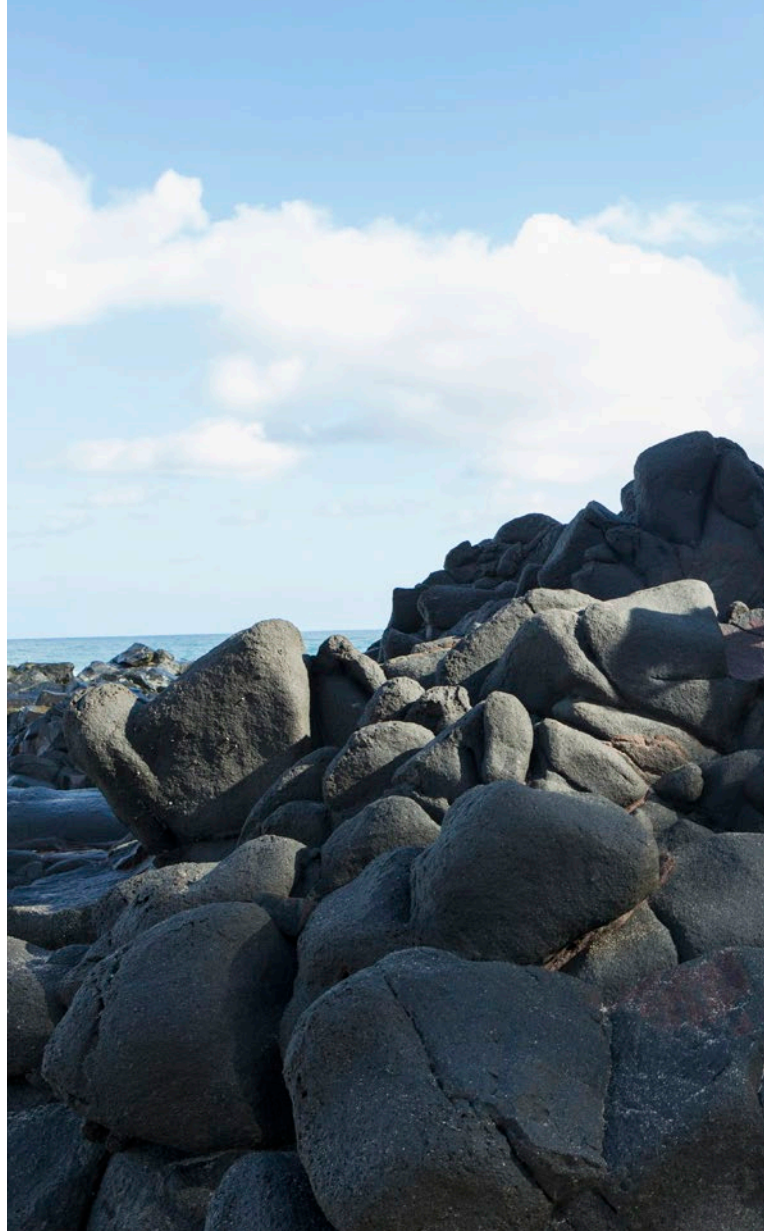
Sustainability sits at the heart of our research and development. It's why we use natural stone, constantly reduce our carbon footprint and recycle to look after our planet and our people.

Restaurants are continuously being renovated and upgraded, impacting the environmental footprint of its building materials. These changes mean that you need building materials that leave a positive impact on people and the planet.

Luckily for us, over 90% of our products have a Cradle to Cradle certification at the Bronze and Silver level, meaning that when you choose Rockfon, you're getting more than just a great product, you get a real commitment to a more sustainable future.

Stone wool is a fully sustainable closed-loop product. It can be recycled again and again without any degradation in quality and we offer all our customers to recycle old stone wool ceiling tiles and cut-offs from installation helping make a meaningful contribution to a greener planet.

*Visit our webpage for more information about our takeback scheme.*



**159 000  
tonnes of  
stone wool  
were collected  
for recycling  
in 2019.**



## Bewley's Cafe

Dublin, Ireland

### *Challenge:*

The iconic Dublin landmark, Bewley's Cafe on Grafton Street, was re-opened following a €12million restoration. The goal of the renovation was to modernise the space and improve its acoustic environment - all while respecting the originality and original features of the cafe.

### *Solutions and results:*

Brendan Duffy of Gilligan Architects chose Rockfon® Mono® Acoustic ceilings to improve the indoor acoustics, reducing reverberation times by 35%. The architects opted for Rockfon Mono acoustic because "The smooth render of Rockfon Mono Acoustic provides a seamless surface in keeping with the original ceiling." Bewley's Assistant General Manager was pleased with the results, "Before the new ceiling, noise levels could get very high, making it difficult to hear. Now the feel of the café has changed; it is much calmer and more relaxed."

CASE STUDY ▼



# Be part of making the world sound better to everyone

Get started today

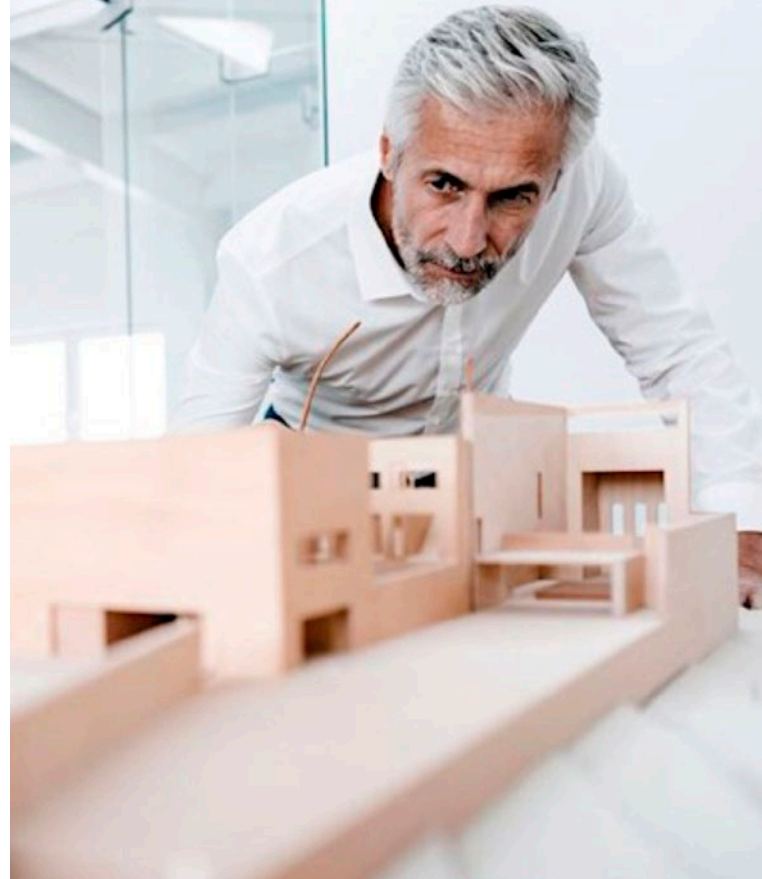
Rockfon is part of the ROCKWOOL Group and we are the world's leading acoustic company – and our mission is to keep things quiet.

## **We're the Mmm in restaurants**

Every day we are inspired to innovate with sound solutions that help people think, concentrate and enjoy life more. Our acoustic solutions do more than reduce noise, they create a fun and pleasant atmosphere that help customers taste their food better.

## **We're here to help**

We have 22 offices and 9 manufacturing facilities worldwide and we're on hand to help you find the right acoustic solutions for your next office project.



## **We are your sustainability partner**

Our high-quality products are made from natural stone. They work, they're beautiful and they last – until they're recycled to make more. And we provide all the necessary documentation to support you in creating a sustainable project.

## **Our online resources**

Explore our website for sound calculations, instruction videos, documents, and a comprehensive BIM library with objects compatible with ArchiCAD and Revit. Speed up your design processes with this free to use support on:

[www.rockfon.co.uk](http://www.rockfon.co.uk)

# Let's connect

Give us a call whether you need advice on getting the right acoustic environment for your project, want to hear more about one of our products or just need technical support. We're here to help.

## Rockfon Middle East

rockfonme@rockfon.com  
ae.rockfon.com

## Rockfon Asia

enquiry@rockfon.com  
www.rockfon.asia



Rockfon  
proved to be  
an invaluable  
partner.

Stephen Holmes  
Managing Director, Linear



Rockfon® is a registered trademark  
of the ROCKWOOL Group.

06/2021 | All colour codes mentioned are based on the NCS - Natural Colour System® property of and used on license from NCS Colour AB, Stockholm 2012 or the RAL colour standard. Subject to alterations in range and product technology without prior notice. Rockfon accepts no responsibility for printing errors.

## Sounds Beautiful

### Rockfon Singapore

ROCKWOOL Building Materials  
(Singapore) Pte Ltd.  
No. 7, Tuas Avenue 1  
Jurong Town,  
Singapore 639492  
Tel: (+65) 6861 4722  
Fax: (+65) 6862 3533  
E-mail: enquiry@rockfon.com  
www.rockfon.asia

### Rockfon Hong Kong

ROCKWOOL Building Materials  
(Hong Kong) Ltd.  
Unit 301-2, 3/F, Koon Wah Building,  
No.2 Yuen Shun Circuit,  
Yuen Chau Kok, Shatin,  
N.T., Hong Kong  
Tel: (+852) 2576-6117  
Mobile: (+852) 9161-7924  
E-mail: enquiry@rockfon.com  
www.rockfon.asia

### Rockfon

ROCKWOOL Middle East FZE  
Office 139, Building 6WB, DAFZA  
P. O. Box 293585, Dubai, UAE  
  
Tel: +971-4-214-6280  
E-mail: rockfonme@rockfon.com  
ae.rockfon.com

### Rockfon

ROCKWOOL France S.A.S.  
111, rue du Château des Rentiers  
75013 Paris  
  
Tel: +33 1 40 77 82 82  
Fax.: +33 1 45 86 77 90  
E-mail: info@rockfon.fr  
www.rockfon.fr

