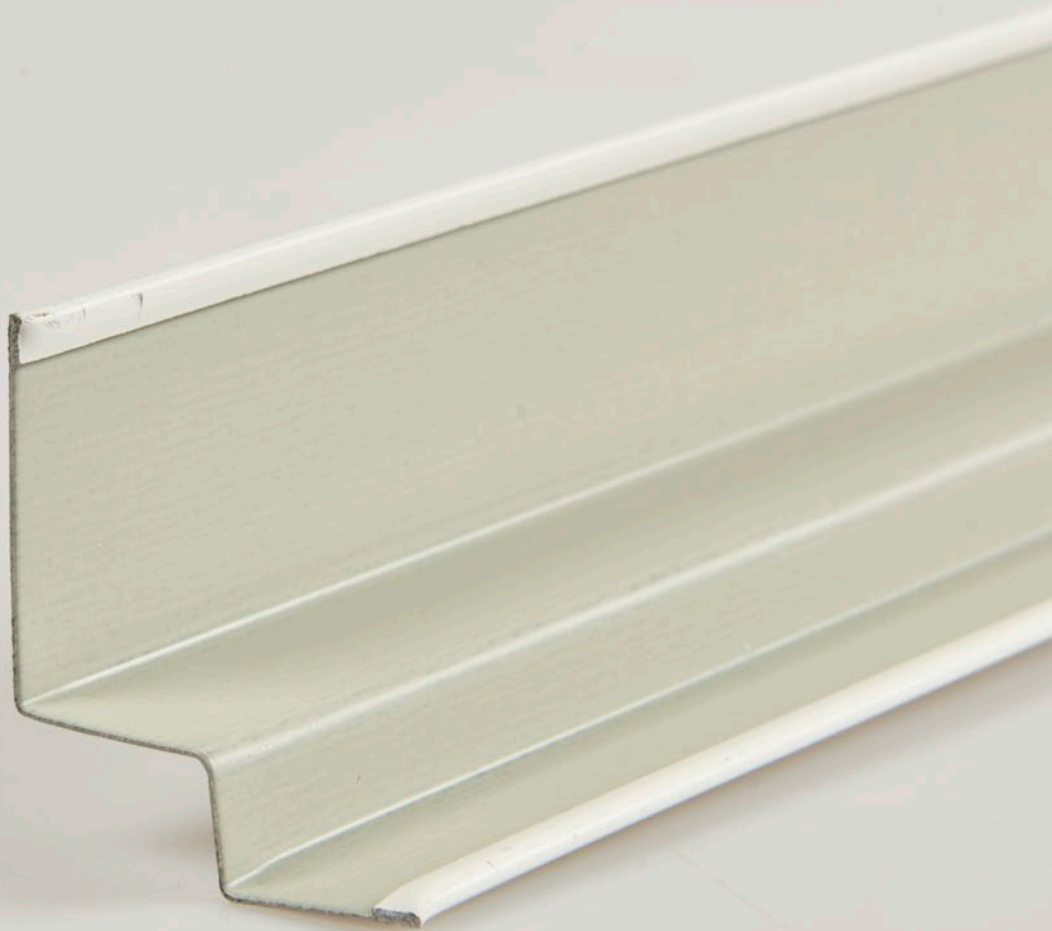


DATASHEET

Chicago Metallic™ W Profiles






Sounds Beautiful

Chicago Metallic™ W Profiles

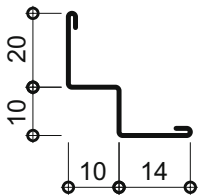
- A range of W profiles (shadow moulding wall angles) for various applications
 - C profile for tiles up to 37mm
- Visible flanges from 15 - 20mm to fit with different T-grids
- Designed for various Rockfon tiles (E, X, M & D-edge)
- Specific corner caps available
- Used with hold-down clips to close gaps between grid and tiles
- Compatible with a variety of hold-down clips according to tile thickness
- Perfect colour match with ceiling grids

Assortment

Product group		Component description	Length (mm)	Colour	Pcs per pack	Lm per pack	Kg per pack
Wall angle options							
W20x10x10x14		W Profile 20 x 10 x 10 x 14mm	3000	02	40	120	20
W22x15x15x15		W Profile 22 x 15 x 15 x 15mm	3000	02	40	120	28,5
W15x20x20x20		W Profile 15 x 20 x 20 x 20mm	3000	02	40	120	32,5

Product description

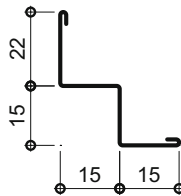
W20x10x10x14



- • Shadow angle with a 14mm face and a 20mm mounting surface.
- Suitable for semi-concealed and concealed tiles of 10mm
- Material thickness: 0.4mm

Body Material thickness0,4 mm

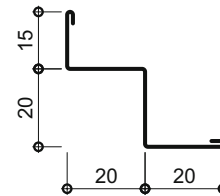
W22x15x15x15



- • Shadow angle with a 15mm face and a 22mm mounting surface.
- Suitable for semi-concealed and concealed tiles of 15mm
- Material thickness: 0.4mm

Body Material thickness0,4 mm

W15x20x20x20



- • Shadow angle with a 20mm face and a 15mm mounting surface.
- Suitable for semi-concealed and concealed tiles of 20mm
- Material thickness: 0.4mm

Body Material thickness0,4 mm

Performance



Reaction to fire

Non-combustible

Sounds Beautiful

